



Your suite awaits you...





38RSSB3 • New England Cherry with Imperial Ebony décor and our optional Lane® Furniture Collection

MOBILE SUITES

The season of DRV...



Seasons come and seasons go, but there's one that's here year 'round. . . the season of DRV. DRV Mobile Suites let you take all the comforts of home with you wherever the road takes you. No matter when you hit the road, whether it's Spring, Summer, Fall or Winter, hit the road with DRV Luxury Suites.



Begin your journey with the one that started it all . . . the DRV Mobile Suites.

The Mobile Suites is the foundation that DRV is built upon. It offers all the comforts of home, all the conveniences of a residential kitchen and the peace of mind that comes from knowing you've chosen the best construction available on the market today.



38RSSB3 • New England Cherry with Imperial Ebony décor

You expect the ultimate in form, function and design. We deliver it. The 2014 Mobile Suites "Gourmet Kitchen" features large, stainless steel residential refrigerators, dishwashers, and garbage disposals along with custom, hand-made islands with convenient 13 gallon pull-out trash cans. You have it in your home, you have it in DRV!



It's in the details.

Around every corner of your Mobile Suites you'll find that no detail has been overlooked . . .

In the kitchen . . . Handmade custom ceramic backsplashes and high polished Corian® countertops with a hinged, one-piece cooktop cover.

In the Living Room . . . Large 46" LED TV on a power lift, custom pull-out desks, and high-end residential furniture.

In the Master Retreat . . . A standard king-sized bed, a full walk-in wardrobe with an unbelievable amount of storage, as well as a full linen closet in all of our side bath models.





38TKSB3 • New England Cherry with Imperial Ebony décor

Mobile Suites floor plans are available from 32' to 43' in length, and include exclusive standard features such as: perimeter heating in the living room for year-round comfort, high-end soft touch padded ceilings with fully ducted low profile A/Cs for ultra-quiet performance, and energy-efficient dimmable LED interior lighting.



Add a dramatic touch to your Gourmet Kitchen with the elegant, optional black island.



Need a little extra room getting ready for your day?
Prefer a little more floor space in your Master Retreat?
Need a bunk room or a custom office?
...No problem. Our flexible floor plan options let you design the living space that perfectly fits your needs.



Which floor plan
is right
for you?



43' Dallas • New England Cherry with Imperial Ebony décor

Meet our top selling 43' – The Dallas! The Dallas offers a huge bathroom, spacious Gourmet Kitchen and a living room with plenty of room to entertain. A custom hutch doubles as a desk and creates a nice separation between the dinette and living room. Option in our beautiful Lane® leather theatre seating (shown above), and your home is complete.



Our 43' collection is a unique series of floor plans available only through DRV. Both our Mobile Suites and our Elite Suites lines are available in the 43' option, offering the versatility of bunk models, custom offices, or full living floor plans.

Regardless of the 43' floor plan you choose, it will come built on a 15" steel box tube frame, with triple 8000 lb. axles, automotive disc brakes and triple 15,000 BTU ducted air conditioners to ensure both your comfort and your safety.



With DRV...

you can have
more.





38RESB3 • Chestnut Maple with Café Au Lait décor

ELITE SUITES



The elegance
you've come to
expect.



Stand tall in the Elite Suites — our moving masterpiece. Absolutely no detail has been overlooked, from professionally stained hardwood cabinetry with high polished quartz countertops to hand-laid custom flooring. This residential combination separates the Elite Suites to a class by itself.

We have paid just as much attention to the quality of the exterior of the Elite Suites as we have the interior, by creating an *industry-first* full fiberglass exterior. This top of the line exterior package is standard on the Elite Suites and includes the one-piece molded fiberglass roof, and custom-molded fiberglass fender skirts. Coordinating window silks are also standard to complete a look that will really turn heads.



38RESB3 • Chestnut Maple with Café Au Lait décor
shown with Natural Limestone Quartz and optional Black Island

Each Elite Suites Gourmet Kitchen is built around a standard stainless steel residential appliance package that includes a dishwasher, induction cooktop, garbage disposal and 25 cu. ft. residential refrigerator. . . with plenty of room to stock up on all your favorites! Elegant hand-laid ceramic backsplashes, oil-rubbed residential 110V light fixtures and a custom over-the-island light feature complete the Elite Suites Gourmet Kitchen package.



The Elite Suites made its debut in 2006, in response to our customers' desire for even more space and features from the DRV line. Over these last seven years we have continuously improved and upgraded our Elite Suites to make sure it's truly the top of the line!

Why does the Elite Suites feel so much like your own home? It's because of the unique straight roof line, the oversized windows and the extended 8' tall slide-outs. This distinctive profile allows us to create fully finished residential interiors.



Put all of these amazing standard features on top of a MOR/ryde Independent Suspension System (IS), automotive disc brakes and 17.5" Goodyear® tires and you've really got the ultimate home on wheels.

It's time
for the
best.



38PS3 • New England Cherry with Imperial Ebony décor
shown with Optional Deluxe Hardwood Valances and Natural Limestone Quartz

The Elite Suites' unique straight roof line and 8' tall interior slides allow for some exceptional design features such as full overhead cabinetry across the dinette slide-out and picture windows surrounding the living room with deluxe, manual day/night roller shades. A full outside home theatre system featuring an LED 32" TV with DVD player lets you have the best of both worlds, indoor and out.



Find luxurious touches at every turn inside your Elite Suites, from indirect lighting above the slide-outs to full extension soft-close drawers on metal guides.

Wake up relaxed and refreshed after a great night's sleep on your Sleep Number® mattress with dual remote control.

In the kitchen, be inspired by beautiful, residential, quartz countertops with raised panel island fronts, and enjoy the convenience of the hidden pull-out trash bins and appliance garage with pull-out hardwood tray.



In the living space, enjoy the flexibility of the power lift TV. If it's just the two of you, power the 46" LED TV up to catch up on the news... or lower it and have plenty of space while using the custom pull-out desk.



Luxurious
touches
at every turn.



Mobile Suites Standard Exterior



Mobile Suites Optional Exterior
Full Body Paint (Alberta Sands)



Mobile Suites Optional Exterior
Full Body Paint (Desert Sands)



New for 2014
Elite Suites Standard Exterior – Superior Sunrise



Elite Suites
Standard Exterior
Full Body Paint w/Window Silks (Pearl)



Elite Suites
Standard Exterior
Full Body Paint w/Window Silks (Garnet)



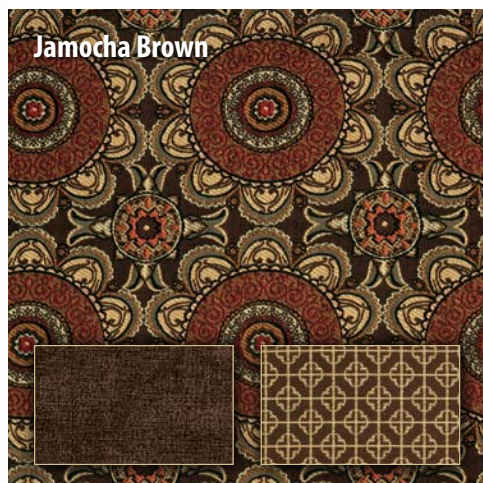
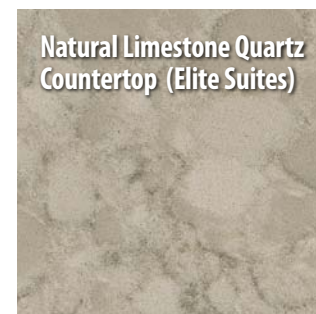
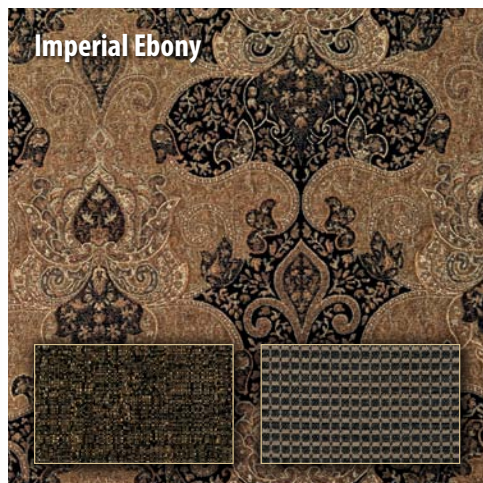
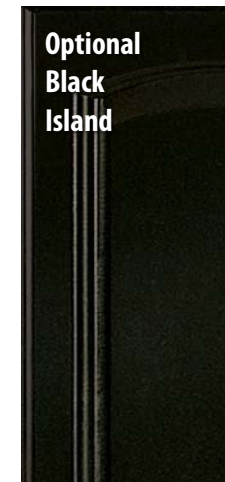
Elite Suites
Standard Exterior
Full Body Paint w/Window Silks (Sapphire)



Elite Suites
Standard Exterior
Full Body Paint w/Window Silks (Platinum)

Mobile Suites and Elite Suites

Décor Selections





39RBSB4

MOBILE SUITES
ESTATES



Contemporary
looks...
DRV quality.



NEW for 2014

Keeping a close eye on residential trends keeps DRV at the top when it comes to innovations in our product lines. These trends were the inspiration for the newly designed Mobile Suites Estates line, which brings a contemporary touch to the DRV family. It's built on the same solid foundation and incorporates all of the exclusive features of DRV while introducing new color schemes and residential touches like 2-tone custom cabinetry.

The Mobile Suites Estates gives you all the safety and quality you've come to trust from DRV while adding an eye-catching contemporary style!



39RBSB4

Enjoy the open concept design of the Estates 39RBSB4 along with the residential appliances that are standard in all our Gourmet Kitchen layouts. You'll appreciate the convenience of our exclusive custom power quartz cooktop lid that allows you either countertop or cooktop access with one push of a button!



Clean
lines...
modern
feel.



The Mobile Suites Estates will feel like home with the unique profile of the straight roof line, 8' tall slides and oversized windows to create a fully finished residential interior.

Find your bliss in the Estates 39RBSB4 beautifully engineered master suite including a full 60" shower, large linen closet and a combination bed/bath slide for maximum storage and space.



39RESB3 • Chestnut Maple

The Estates offers several unique floor plans, with amenities like quartz counters and residentially designed 2-tone hardwood cabinetry as well as residential Lane® leather furniture. Take in the beauty of your outdoor surroundings or enjoy complete and total privacy with 8' tall slides and large frameless windows with deluxe pull day/night roller shades.



The Gourmet Kitchen in the Mobile Suites Estates is just truly gorgeous. It's built around a standard stainless steel residential appliance package that includes a dishwasher, power cooktop, garbage disposal, and 25 cu. ft. residential refrigerator. Add to that a custom, handmade ceramic backsplash, high polished quartz countertops and rich 2-tone cabinetry, and you've really got the kitchen of your dreams.

Take a closer look at the floor plan collection and you'll find subtle differences that set the Estates line apart. Each Estates floor plan includes a large 48-60" shower, a full linen closet and an extended front cargo area for maximum storage capability.



A home that
just feels
like you.



Mobile Suites Estates
Standard Exterior



Mobile Suites Estates
Optional Exterior
Full Body Paint (Winter Wind)



Mobile Suites Estates
Optional Exterior
Full Body Paint (Vegas Nights)



Mobile Suites Estates
Optional Exterior
Full Body Paint (Caramel Swirl)



Mobile Suites Estates D cor Selections



Kona Ice Quartz
Countertop



Chestnut Maple



Urban Glaze



Vinyl
Wood
Plank
Boca



Lane® Furniture
Rafia



Lane® Furniture
Brown



Lane® Furniture
Chocolate



Lane® Furniture
Black

Features and Benefits...

From the ground up, all units are built with automotive style components. Our innovative designs make it easier to transport, set up and maintain your unit.

Structure:

- ✓ **Professionally designed and tested 15" triple steel box tube chassis.**
Super strong foundation to build a lasting, high quality fifth wheel.
- ✓ **All-weather heavy duty aluminum floor system.**
The floor is screwed and bolted together and will not rot over time. Also, we do not use staples which eventually work up through the floor covering.
- ✓ **R-29 insulated frame floor system with three weather barriers.**
Warm floors for extended or full time use: and keeps out condensation.

Technology:

- ✓ **New state of the art Level-Up™ leveling system and industrial hydraulic system.**
The original Level-Up™ (designed by DRV) with steel jacks mounted at a 5 degree angle.
- ✓ **New automotive style Kodiak® disc brakes.**
Limited lifetime warranty; smoother stopping; shorter stopping distance; low maintenance cost.
- ✓ **Heavy duty 8,000 axles with oil bath hubs.**
Larger carrying capacity; less axle problems; low maintenance; best ride quality available.
- ✓ **Heavy duty Goodyear® H-rated 17.5" tires and aluminum eight bolt wheels.**
Heavier load capacity. Special tread pattern to dissipate heat. Tires are regroovable for miles and miles of safe use. Wheels are light weight and will not rust.
- ✓ **Greasable suspension with bronze bushings.**
Ease of maintenance and long-wearing.

Sturdy:

- ✓ **Screwed and glued construction.**
Solid; 16" o.c. stud spacing.
- ✓ **3.25" aluminum framed walls with R-16 insulated rating. Exclusive foam core vapor barrier.**
Lightweight; lower heating and cooling cost; noise reduction; eliminates chance of condensation.
- ✓ **Radiused aluminum roof rafters on 16" centers.**
Lightweight; improved water run off; maximum load capacity per square foot.
- ✓ **R-25 insulated roof system with plywood and rubber or fiberglass covering.**
Improved weather barrier; sound deadening; low maintenance; lower heating and cooling costs.
- ✓ **Soft touch interior ceiling.**
Sound proofing; easy to clean; extra insulation.

Refined:

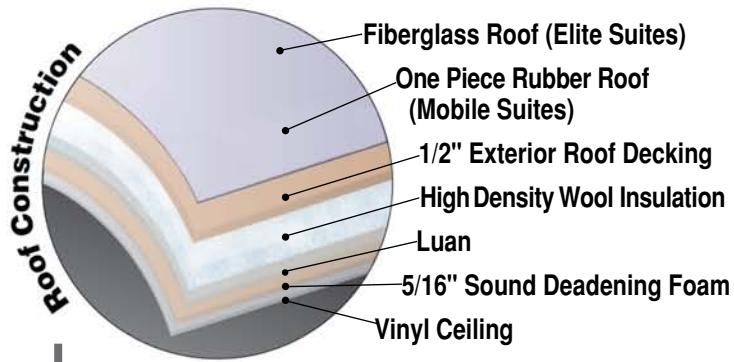
- ✓ **Conveniently located wall switches control all lighting.**
Fingertip control of all task and decorative lighting.
- ✓ **Overhead LED room lighting on dimmer switches.**
Personal light control.
- ✓ **Designer full face cabinet doors and soft close drawers.**
Optimal storage; residential look; residential function.

Reliability: steel

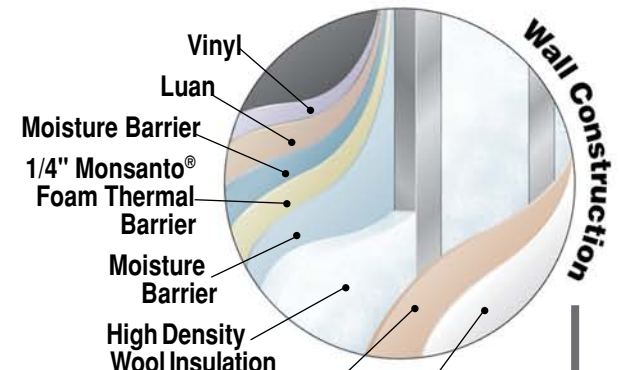
- New industrial steel hydraulic jacks.
- High pressure hydraulic lines with metal fittings.
- New individual push button slide room controls.
- New industrial stabilizer jacks located and wind tested to provide maximum stability.
- Heavy gauge UL copper wiring.
- New residential copper water manifold.
- Convenient lights at all exterior service locations.
- Reliable LED lights.
- Mid unit turn indicator.
- Gel coat fiberglass walls and exterior doors.
- 36 month limited warranty.
- 1/2" plywood roof decking.
- Extra sound proofing in floor, walls and roof.
- Engineered back up lights.
- Frameless tip out tinted safety windows.
- Ultra quiet ducted lo-pro A/Cs
- New automotive disc brakes.
- Pull out battery and LPG bottle trays.
- Over size basement storage doors with gas lift cylinders.
- Furnace return air replaceable filter.
- New automotive painted exterior graphics.
- Tough skin special coated rock guard.

NOTE: Some features shown are exclusive to specific makes and models. Please review the complete Standards and Options list for availability.

Constructed for Full Time Living



Residential Roof R25



Residential Sidewall R16



Hydraulic Stabilizer Jacks

Slideout Hydraulics w/Individual Electronic Control

Wider Tread

High Density Wool Insulation

Luan

Gel Coated Fiberglass Exterior

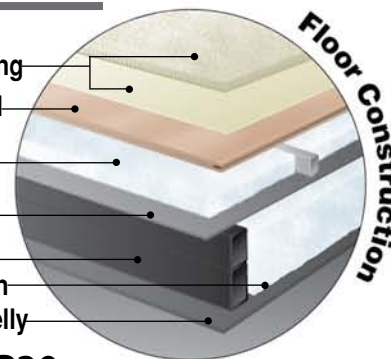
EcoBatt High Density Wool Insulation is derived from renewable materials.



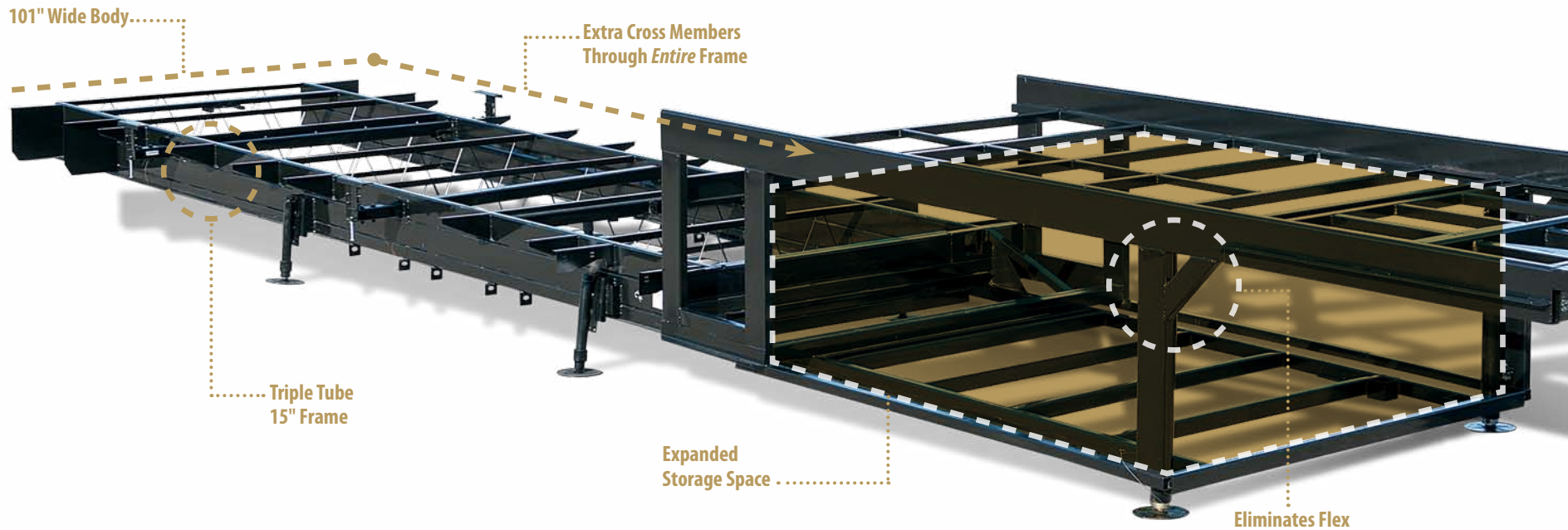
Vinyl
Luan
Moisture Barrier
1/4" Monsanto® Foam Thermal Barrier
Moisture Barrier
Aluminum Roof Rafter 16" O.C.
1" x 2 1/2" Aluminum Studs

Carpet/Congoleum Vinyl Flooring
5/8" T/G Exterior Grade Plywood
1" x 2 1/2" Aluminum Floor Joists
High Density Wool Insulation
Vapor Barrier Underbelly
15" Steel Box Tube Chassis w/High Density Wool Insulation
Extruded Double-Layer Underbelly

Residential Floor R29



All New Sub-Zero Thermal Pack with High Density Wool Insulation – Standard on all Suites



Stacked triple-tube steel frame for 15" of maximum strength; the largest foundation on any fifth wheel in the industry.



Industrial pinless, **steel** hydraulic jacks are mounted at a 5-degree angle for maximum stability.



Commercial hydraulic rack & pinion slide-outs. All gear boxes are located inside the frame for the ultimate weather protection.



Heavy-duty 17.5" Goodyear® tires provide increased load capacity while staying cool on long hauls. We use truck tires, not RV tires, to ensure better performance and peace of mind.



Commercial oil bath hubs surrounded by 8 large 5/8" stud bolts and standard automotive disc brakes round out the safety features of every DRV unit.



Box Steel Solid

The foundation is the most important part of your home. It needs to be strong, reliable, and able to last the tests of time. DRV's custom-engineered 15" triple box tube frame measures 101" wide — the largest, most rigid fifth wheel frame in the industry. This design eliminates flex around the pin box, and allows us to frame even the upper deck with steel to open up the storage compartment, providing you with space to fit all your personal belongings.

The Exclusive DRV 6-Jack Levelup System

Designed by DRV for DRV. No one else can offer you the maximum stability that our 6-jack levelup system provides, with hardened steel jacks at a 5-degree outboard angle.



Residentially-hung sidewalls are carriage-bolted into the floor for solid construction and superior strength.

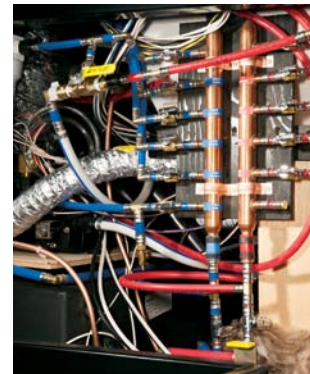


Our 3 1/4" walls are the thickest in the industry, giving you maximum insulation from noise and weather. The exclusive foam core vapor barrier eliminates condensation.



Formaldehyde Free!

High-density wool **R-16** residential insulation completely surrounds all of our walls and slides. Best insulation in the industry *and eco-friendly!*



A copper water manifold comes standard, ensuring equal water pressure throughout your home. And each water line is clearly labeled and has its own shut-off valve, allowing you to isolate a single line without shutting off water to the rest of your home.



MOR/ryde® I.S. Suspension eliminates the axle and leaf springs, allowing each tire to work independently. With 5 1/2" of travel per assembly, MOR/ryde® I.S. will absorb road shock and protect your home for its lifetime.

DRV Standards

Frame/Running Gear:

- Goodyear® 17.5" H-Rated Re-groovable tires
- Heavy duty Grease bolt shackles w/ bronze bushing
- Kodiak® automotive disc brakes
- Trail Air® EquaFlex rubber equalizer suspension
- MOR/ryde® I.S. Suspension (Elite Suites)
- Heavy duty 8,000lb rated axles
- Commercial grade oil bath hubs
- 15" triple stacked box tube frame
- 101" wide body
- Industrial Hydraulic System for Jacks & lower level Slides
- Electric bedroom slide
- Slide outs with select push button controls
- Pinless, industrial hydraulic front landing jacks at 5 degree outboard angle
- Rear stabilizer jacks
- Hydraulic rear stabilizer jacks (Elite Suites)

Construction: Floor

- 3" thick floor
- 14" O.C. floor aluminum floor joists
- Screwed and glued joist construction
- 5/8" Tongue and Groove Plywood flooring
- Four Season perimeter heat ducting in floor
- Residential Rated R29 formaldehyde free wool insulation

Construction: Walls/Slides

- 3 ¼" Thick walls/Slides
- 16" O.C. stud spacing
- Screwed and glued aluminum stud construction
- ¼" Monsanto® Fome-Cor Vapor Barrier (eliminates condensation)
- ¼" Thick High gloss gelcoat fiberglass w/ wood backer
- Residential Rated R16 formaldehyde free wool insulation

Construction: Roof

- 16" O.C. rafter spacing
- Residential Rated R25 formaldehyde free wool insulation
- ½" Plywood roof overlayment
- Seamless, 1-piece rubber roof (Mobile Suite)
- Fully molded 1-piece fiberglass roof (Estates, Elite Suites)
- Soft-touch vinyl ceiling, including interior slide-out ceilings

Exterior:

- Subzero thermo-pack high density wool insulation
- High Gloss gelcoat fiberglass
- High gloss gelcoat fiberglass molded caps
- Custom painted exterior with clear coat (Mobile Suites, Estates)
- Full body painted exterior w/ custom window silks (Elite Suites)
- Frameless tinted safety glass windows
- Four exterior security lights
- Back-up lights with 50 watt halogen lights
- Commercial LED exterior clearance lights
- Amber LED turn signal
- Mid-ship turn signal
- LED docking lights
- 78" entry door
- Removable storm door panels
- Keyless entry door (Estates, Elite Suites)
- Slam door compartment latches
- Extra thick compartment doors with gas struts
- Easy access light switches for basement
- Washable storage compartment liner
- Lend-a-hand exterior grab handle
- Power awning with aluminum weather shield
- LED lighted awning (Elite Suites)
- Water pump switch at outside hookup center
- Coach-Net® Emergency Road Side Assistance

Systems/Tanks:

- 50amp service with detachable cord
- 80amp 12VDC converter
- 100 gal. Fresh water tank
- 75 gal. Grey water tank w/ power flush
- 50 gal. Black water tank w/ power flush
- Residential Pex water lines
- **Exclusive Copper Water Manifold w/ individual shut-off valves**
- Whole House water filtration system
- Single lever water heater bypass
- Single lever water pump bypass
- Slide out propane tray with dual 40lb tanks
- 12VDC battery on pull out tray
- 12 gal. gas/elec. DSI water heater
- 40,000 BTU Furnace
- **Residential 5 duct heating system w/ 6" ducting**

- **Forced heat ducting to tanks/water system**
- **Fully ducted A/C system with cold air return**
- 15,000 BTU low-profile main A/C
- Wired and ducted bedroom A/C with cold air return
- Triple 15,000 BTU low-profile A/Cs (all 43' models)
- Solar Prep
- HD Roof Satellite Prep for dual DVR receivers
- HD Ground satellite and cable prep
- Power TV antenna

Interior: Luxury Living Room/Dinette

- Hand laid 16x16 vinyl floor tile (Mobile Suites/Elite Suites)
- Hand laid vinyl wood plank flooring (Estates/Elite Suites)
- Residential rebond carpet pad
- Plush residential high durability carpet
- New England Cherry/Chestnut Maple Hardwood Cabinetry
- Chestnut Maple/Urban Glaze Hardwood Cabinetry (Estates)
- Hardwood Fascia Trim around slide outs
- Hardwood cabinet stiles (pocket drilled/screwed)
- Concealed cabinet door hinges
- Full face raised panel cabinetry
- **Soft-Close full extension metal drawer guides**
- **LED interior ceiling lighting on dimmer switches**
- Decorative wall clock (Mobile Suites/Estates)
- Personalized hardwood wall clock (Elite Suites)
- Utility closet with coat storage and centralized control station
- Interior ceiling fan
- Decorative 110V light sconces & overhead dinette light
- Custom Hardwood dinette buffet w/ storage and pull-out table
- (2) hardwood dinette chairs w/ fabric accent
- Day/Night pull down shades (Mobile Suites)
- Crown molding throughout
- Manual day/night roller shades (Estates/Elite Suites)
- Power TV lift w/ extra window
- Swing away TV bracket (some 43' models)
- HD wiring throughout
- Dyson hand held vacuum & air mover (Elite Suites)
- Lane® Brand leather furniture (Estates)
- Hide-a-bed sofa (rear sofa models)
- Deluxe Air bed Sofa (rear entertainment models)
- Residential fabric rocker/recliner (Mobile Suites/Elite Suites)

Interior: Gourmet Kitchen

- **25 cu.ft. Residential Stainless Steel Side by Side Refrigerator**
- **Stainless Steel GE Profile convection/microwave**
- **Stainless Steel residential dishwasher**
- **Garbage disposal**
- **Pull-out 13 gal. garbage can**
- Double deep bowl stainless steel sink
- Residential goose neck faucet with pull-out sprayer
- **Custom made ceramic backsplash**
- High polished Corian® countertops (Mobile Suites)
- Residential Quartz countertops (Estates/Elite Suites)
- Sealed 3 burner cooktop w/ hinged countertop lift
- Electric 2 burner Induction cooktop with Starter kit (Elite Suites)
- Custom Appliance garage with pull-out tray (most models)
- Custom Wood accent w/ pendant lighting (Mobile Suites)
- Hardwood raised panel light box w/ 110V over island lighting (Estates/Elite Suites)
- Lighted pantries and kitchen/bathroom toe kicks

Interior: Master Bath/Hallway

- Hardwood Steps
- No carpet in hallway
- Washer/Dryer prep
- Heat and A/C ducting in bathroom
- Fantastic fan create-a-breeze in bathroom
- 1-piece fiberglass shower with molded seat
- Granite colored fiberglass shower (Elite Suites)
- Sky-light over shower
- Porcelain toilet with water saver spray
- Macerator Toilet with push button control (Elite Suites)

Interior: Master Bedroom

- **Custom Walk-in front closet with built in dresser**
- **Real cedar lined front closet**
- **Custom Hardwood wardrobe doors**
- King bed suite 72" x 80" with innerspring mattress (Mobile Suites/Estates)
- Sleep Number® bed by Select Comfort (Elite Suites)
- Queen bed suite (Std. 32TK3, 32RS3, Denver, Cincinnati, Estates 39RBSB4)
- Full storage under bed base
- Separate bedroom ceiling speakers
- Over the bed reading lights

Cabinetry (Standards):

- New England Cherry
- Chestnut Maple
- Chestnut Maple/Urban Glaze (Std. Estates Only)

Décor (Standards):

- Café Au Lait (MS, ES)
- Imperial Ebony (MS, ES)
- Jamocha Brown (MS, ES)

Flooring (Standards):

- Honeycomb (MS)
- Mountain Ridge (MS)
- Fossil Bute (ES)
- Smooth Pebble (ES)

Countertops (Standards):

- Corian®: Ravine (MS)
- Kona Ice Quartz (Estates)
- Natural Limestone Quartz (ES)
- Vintage Limestone Quartz (ES)

Interior:

- Bonded Leather Recliners
- Bonded Leather Sofa
- Built-In Fireplace
- Deluxe Day/Night Roller Shades (Std. Estates, ES)

Entertainment:

- 46" Samsung® LED HDTV Home Theatre Package
- 26" Samsung® LED HDTV Bedroom
- 32" Samsung® LED HDTV Outdoor Entertainment (Std. Estates, ES)
- Winegard® Trav'ler HD Auto Satellite

Kitchen:

- GE Advantium® Microwave
- 3 Burner Range/Oven IPO 3 Burner Cooktop (N/A ES)
- Variable Speed 4.5 GPM Water Pump
- Magnum 1000 Watt Inverter for Residential Refrigerator Only
- Black Raised Panel Kitchen Island

MS = Mobile Suites
 ES = Elite Suites
 Estates = Mobile Suites Estates

Bedroom:

- Built In Front Wardrobe Safe With Keyless Entry (Std. ES)
- Queen Bed Suite (Std. 32' MS, ES39RBSB3, Denver)
- Linen Package
- Chestnut Maple Folding Chair
- New England Cherry Folding Chair
- Sleep Number® Bed By Select Comfort (Std. ES)
- Vanity Slide in Front Bedroom (Std. 36TKSB4, Denver, Dallas) (N/A 32' MS)

Bathroom:

- Tub/Shower Combo (N/A 36TKSB4)

Systems/Vents/Fans:

- 13.5 BTU Ducted Lo/Pro AC (bedroom)
- 15 BTU Ducted Lo/Pro AC (bedroom)
- Heat Pump
- Fantastic Fan w/ Switch Control – Kitchen/Bedroom
- Fantastic Fan w/ Rain Sensor & Remote – Kitchen/Bedroom
- Splendide® Front Load 2 piece
- Splendide® XC 2100 Combo
- Central Vacuum (N/A ES)
- Generator Prep-Auto Change Over
- Onan® 5500 Marquis Gold Generator w/ Prep
- Dual 6VDC H.D. Battery System
- Magnum 2800 Watt Inverter w/ Four 6V Batteries
- Power Management System
- Surge Protector w/ Voltage Protection & Remote Display
- Heat pads on all Tanks w/ Elbow Heater on Drain Pipe
- Canadian All Weather Package (Twin 30BTU Furnaces/Heat pads)

Construction/Running Gear:

- Goodyear® 17.5" Spare Tire & Carrier
- Commercial Six Point Pinless Hydraulic Leveling System
- One Touch Auto leveling
- MOR/ryde® I.S. Suspension & MOR/ryde® Pin Box (Std. ES)
- Trail-Air® C/P Suspension/Tri-Glide Pin Box
- Monroe® Gas Magnum Shocks
- Wireless Tire Pressure & Heat Sensor Monitoring System
- 2" Receiver Boat Hitch w/ 4-way Flat Plug
- **Power 4-Step Entry (Exclusive)**
- Manual 4-Step Entry
- Power Cord Reel
- Keyless Entry Door (Std. Estates/ES)

Exterior/Awnings:

- Slide Toppers
- Dinette Patio Awning w/ Weathershield
- Slide Out Storage Tray (36"x90")
- Audible Wireless Backup Camera System
- Roof Rack & Detachable Ladder
- Ladder Only
- Thermopane Windows
- RVIA

Full Body Paint

(Standards/Options):

- Alberta Sands (opt. MS)
- Desert Sands (opt. MS)
- Winter Wind (opt. Estates)
- Vegas Nights (opt. Estates)
- Caramel Swirl (opt. Estates)
- Garnet (Std. ES)
- Pearl (Std. ES)
- Sapphire (Std. ES)
- Platinum (Std. ES)
- Superior Sunrise (Std. ES)
- Western Gem (Std. ES)





DRV

Luxury Suites

0160 W 750 N • PO Box 235
Howe, IN 46746

**Factory tours by appointment,
please call for specifics
260-562-1075**

This brochure is based upon the latest product information available at the time of printing. DRV reserves the right to make changes at any time to prices, colors, materials, equipment, specifications and models, and to discontinue models without notice or obligation. Color representations are as close as photographic/print reproduction will allow. All specifications are approximate and dimensions nominal. Text and/or photos may represent equipment or décor items which may not be included as a standard item in your model of choice.



www.suitesowners.com

Be sure to join our outstanding DRV owner's club!

This truck is not the recommended vehicle for our Elite Suites and was used for photo purposes only. Please consult your local dealer for the proper truck/trailer combination.

www.drvsuites.com

facebook

twitter

2014